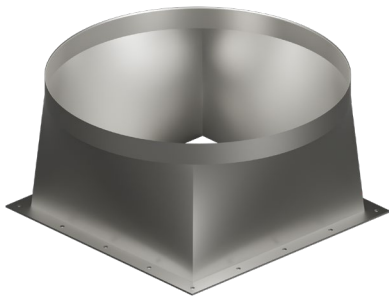


TX - Transitions

Light gauge Galvanized piping system – Fitting



Specifications

Material: Galvanized steel

Surface: Z275

Z: ~15°

Description

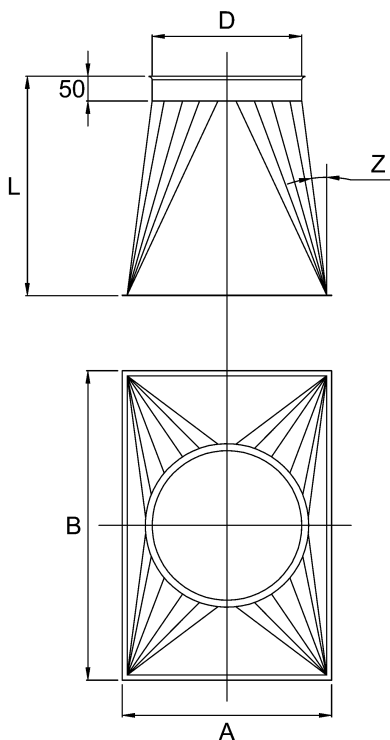
Beatings on the circular end allows for assembly with fitting rings. Alternatively, loose flanges can be used for assembly.

Used to connect cylindrical pipes with rectangular flanges.

Due to the number of possible variations, no transitions are stock. Transitions can be made to order based on the D, A and B dimensions.

The part numbers for transitions are written as:
0142DDDD-AAAA-BBBB

Example:
D: 250 mm
A: 300 mm
B: 500 mm
Part no.: 01420250-0300-0500



Made to order